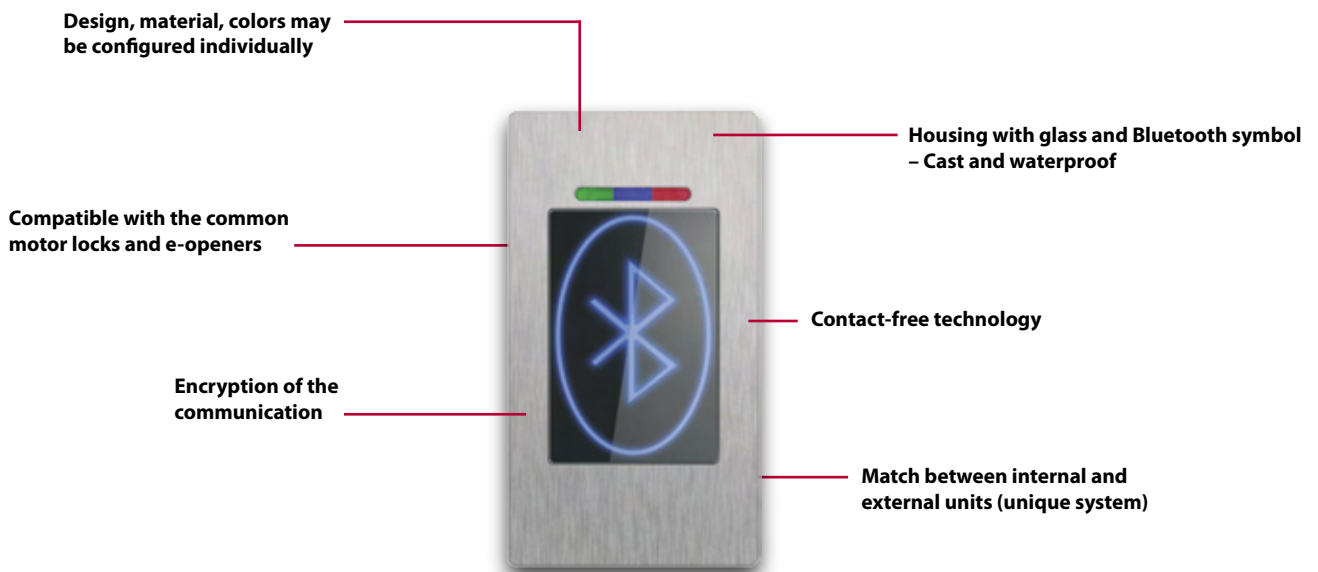


BioKEY® INSIDE

innovation made in germany

International award-winning design lines: BioKEY® Bluetooth®

The new BioKEY® innovations, BioKEY® stainless steel keyboard and BioKEY® Bluetooth®, are based on the multiple award-winning BioKEY® design and expand the modular concept BioKEY® INSIDE as a supplement to the Fingerprint. Most recently the new BioKEY® product family has been honored with the internationally-acknowledged "red dot design award 2012".



Bluetooth®

Bluetooth® as a modern communications medium is increasingly becoming omnipresent with the ever greater use of mobile phones and in the automotive industry. BioKEY® Bluetooth® now offers this contact-free technology as the ideal medium for opening doors. BioKEY® Bluetooth® supports the customary Bluetooth® connections and can thus be used immediately with many mobile phone models.

So as meet high-tech demands and modern needs IDENCOM has taken new paths in the design and above all in the use of materials. The colored glass with the Bluetooth® symbol, the BioKEY® circuit board and the control unit (optical relay) are integrated in a cast waterproof housing and are ideally suited to outdoor use regardless of the weather conditions.

Modular system

BioKEY® Bluetooth® has retained in full the multiple award-winning and proven "modular concept" from BioKEY®INSIDE. With the differing product variants, which are also offered as flush-mounted or wall-mounted versions, companies from the diverse sectors in the strongly expanding market for access controls are offered the possibility to expand and supplement their own portfolio with suitable, high-quality products containing the respective technology.

Error-free installation and intuitive operation

Only one hole needs to be milled for the installation of the BioKEY® variants. The milling dimensions and the cabling plan are identical with those of the popular BioKEY® Fingerprint. An exchangeable and expanded complete BioKEY® product family is now available to manufacturers in a uniform system concept.

BioKEY® Bluetooth is compatible with the customary motor locks and e-openers. The pre-terminated cable allows for error-free cabling (Plug and Play). Only one cable has to be laid vertically to the motor lock. There is no "cable clutter" in the door.

Well-thought-out security

An acknowledged encryption process from high-security applications is integrated as standard. In addition, so as to exclude the possibility of manipulation, a match is created in the factory – to create a unique system – between the internal and external units.



BioKEY® INSIDE

innovation made in germany

	Item No.	RRP List price
BioKEY® Bluetooth® core elementt	600 770	338,00 €
Relay module for door integration Blackbox	640 010	30,00 €

Door integration with lateral internal attachment without Blackbox

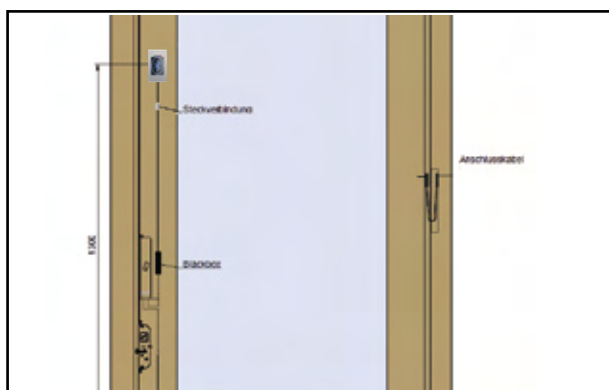
	Item No.	RRP List price
BioKEY® Bluetooth® door integration Universal for all motor locks	677 000	368,00 €
BioKEY® Bluetooth® door integration GU A-Öffner motor lock	677 001	368,00 €
BioKEY® Bluetooth® door integration KFV Genius motorlock	677 002	368,00 €
BioKEY® Bluetooth® door integration Fuhr Automatic motorl ock	677 003	368,00 €
BioKEY® Bluetooth® door integration Winkhaus Blue Motion motor lock	677 004	368,00 €
BioKEY® Bluetooth® door integration Winkhaus STV-EAV motor lock	677 005	368,00 €

Door integration with frontal mounting with Blackbox

	Item No.	RRP List price
BioKEY® Bluetooth® door integration Universal for all motor locks	677 800	398,00 €
BioKEY® Bluetooth® door integration GU A-Öffner motor lock	677 801	398,00 €
BioKEY® Bluetooth® door integration KFV Genius motor lock	677 802	398,00 €
BioKEY® Bluetooth® door integration Fuhr Automatic motor lock	677 803	398,00 €
BioKEY® Bluetooth® door integration Winkhaus Blue Motion motor lock	677 804	398,00 €
BioKEY® Bluetooth® door integration Winkhaus STV-EAV motor lock	677 805	398,00 €

Net prices without VAT

Detail of cable plan



Exploded view core element

